



NEW PRODUCT INTRODUCTION

---

# FLIR VS290 ROUND THERMAL PROBES AND VIDEOSCOPE KITS

NOVEMBER 2, 2021

# NEW KITS DEC 2021

**VS290-33** Thermal MSX Camera kit with side view, 2 m length, probe 19 mm diameter - \$5000

- For Utilities in places with complex electrical wiring and piping, e.g. underground vaults



**VS290-21** Thermal Camera kit with forward view, 1 m length, probe 19 mm diameter - \$4500

For general purpose uses to inspect in narrow or obstructed spaces e.g. attics and crawlspaces



# SYSTEM BENEFITS



## INSPECT DIFFICULT-TO-ACCESS AREAS SAFELY

Quickly find hidden faults without entering unsafe hard-to-reach spaces

- Troubleshoot problems from a safe distance with the 160 × 120 true thermal imager
- Easily maneuver the narrow 2 m or 1 m field-replaceable camera probe to inspect underground electrical distribution faults, inside large gearboxes, motors, attics, crawl spaces, and other cramped locations
- Instantly recognize the location of a temperature issue with FLIR MSX that embosses scene details from the built-in visual camera onto the full thermal image\*
- Navigate dark environments using the bright LED worklight\*



## IDENTIFY, DOCUMENT, AND SHARE

Improve workflow and communicate potential issues before they become major problems

- View findings clearly on the large 3.5-inch color display and use color alarms (isotherms) to quickly identify problems
- Save images and videos using the included SD memory card then upload to a PC via USB-C Cable
- Quickly create reports using FLIR Thermal Studio Suite software and share findings with team members to prioritize repairs



## VERSATILE, RUGGED, AND RELIABLE

Use the VS290 system in the most demanding environments

- IP67 camera tips and IP54 base unit and probe provide a high level of protection against dust and water
- Easily replace or interchange the camera probe while in the field
- Conduct electrical inspections safely with CAT IV 600 V-rated VSC-IR32 and VSC-IR33 probes

\* Visual camera, MSX, and worklight available on VSC-IR32 and VSC-IR33 probes only.

# WHAT ARE MY OPTIONS?

## Visual/IR Inspections System components



### VS290-00

Thermal **MSX** Videoscope Display  
is required for probes

VS290-00 is included in  
2 new probe kits



### VSC-IR32

Thermal **MSX** Camera Probe with  
Side view, 2 m long,  
11 x 40.5 mm rectangular tip.  
Designed for Utility Underground  
Vault Inspection



### VSC-IR33

Thermal **MSX** Camera Probe with  
Side view, 2 m long,  
19 mm diameter round tip.  
Designed for Utility Underground  
Vault Inspection



### VSC-IR21

Thermal Camera Probe with  
Forward view, 1 m long,  
19 mm diameter round tip.  
For general purpose uses

# VS290-33 KEY FEATURES - **NEW**



- Expanding the use of thermal imaging in hard-to-reach areas
- 160 x 120 IR resolution to clearly see areas of concern
- Radiometric JPEG storage provides access to thousands of temperature readings
- MSX® image enhancement and bright worklight to easily identify context and potential issues
- Side-view round camera suitable for or walls with 20mm round holes
- Right fit for many utilities that need probe tip to work through round holes in their manhole covers





# VS290-21 KEY FEATURES - **NEW**



- Expanding the use of thermal imaging in hard-to-reach areas
- 160 x 120 IR resolution to clearly see areas of concern
- Radiometric JPEG storage provides access to thousands of temperature readings
- Lower price point for building inspections
- End-view round camera suitable for use with ceilings, crawl spaces or walls
- Attics and crawl spaces can now be thermally inspected through a 1-inch hole.



# VS290-32 KEY FEATURES



- Expanding the use of thermal imaging in hard-to-reach areas
- 160 x 120 IR resolution to clearly see areas of concern
- Radiometric JPEG storage provides access to thousands of temperature readings
- MSX® image enhancement and bright worklight to easily identify context and potential issues
- Side-view rectangular camera suitable for vault manholes or other objects with openings shaped like long slots > 11 mm wide
- Right fit for many utilities that need probe tip to work through round holes in their manhole covers



# WHO?



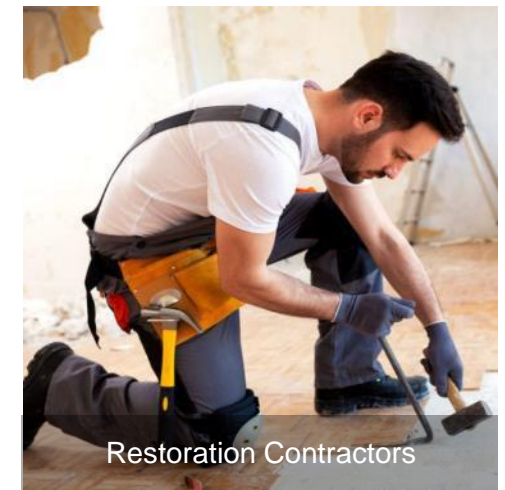
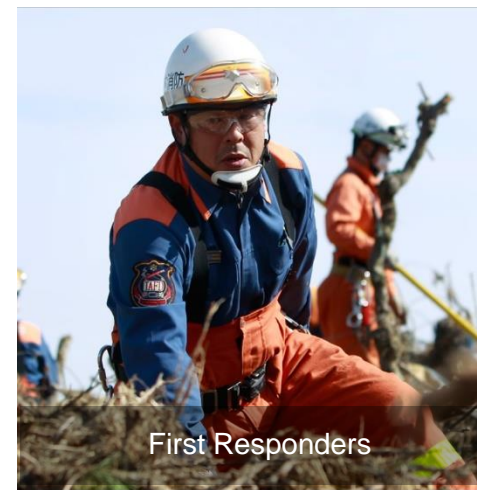
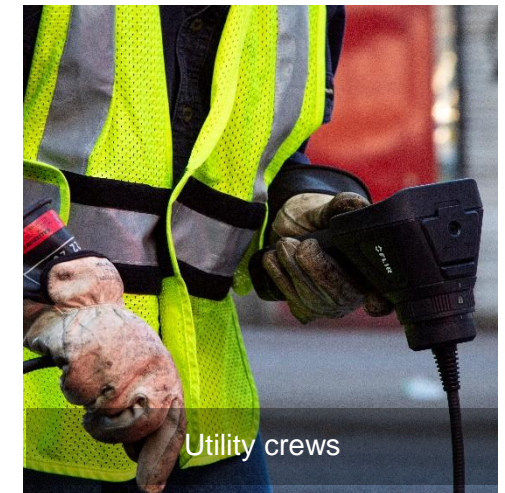
**INSPECT  
HARD-TO-REACH  
SPACES SAFELY**

FLIR VS290 Thermal  
Videoscope Kits



**NOW with 3  
Interchangeable  
Probe Options**

**LEARN MORE**





# UTILITY CONTACTS

## Substation / Transmission

- Safety Engineer
- Underground Transmission Line Manager
- Underground Transmission Line Maintenance
- Diagnostic Technician
- Lead Electrician
- Transmission Operations Manager
- Technical Operations
- M&C Supervisor
- Field Technician
- Electrician Crew Foreman
- Line Mechanic
- Electrical Maintenance Technician
- Senior Electrical Engineer
- Diagnostic Electrician
- Condition Monitoring Engineer
- Diagnostic Technician
- Power Plant Electrician-High Voltage

## Power Generation

- PdM Technicians / Engineers
- Reliability / Maintenance Personnel
- Maintenance Supervisor
- Reliability Engineer
- Plant Electrician
- Plant Foreman
- I&E (Instrumentation & Electrical) Technician
- Mechanical Drives Engineer
- Monitoring Engineer
- Systems Engineer
- Electrical Inspector
- Reliability technician
- Asset Integrity Engineer
- Rotating Equipment Engineer
- Condition Monitoring Analyst
- Maintenance Planner

# 2021 New SKUs w/Round Tip Probes



**VS290-33**  
Thermal MSX Videoscope  
Kit



**VS290-21**  
Thermal MSX Videoscope  
Kit



**VSC-IR33**  
Thermal MSX Videoscope  
Round Tip Probe



**VSC-IR21**  
Thermal Videoscope  
Round Tip Probe

Model #	Product Title [max 40 characters]	What is in the box?
VS290-21	Thermal Videoscope Kit-Forward View	VS290-00 Videoscope display VSC-IR21 Thermal camera probe 2 rechargeable batteries Battery charger SD card USB cable Wrist strap Hard case Printed documents
VS290-33	Thermal MSX® Videoscope Kit-Side View	VS290-00 Videoscope display VSC-IR33 Thermal MSX camera probe 2 rechargeable batteries Battery charger SD card USB cable Wrist strap Hard case Printed documents
VSC-IR21	Thermal Camera Probe with Round Tip (forward view)	Thermal camera probe
VSC-IR33	Thermal MSX® Camera Probe with Round Tip (side view)	Thermal MSX camera probe

# A LA CARTE



**VS290-00**  
Videoscope Display (No Probes)



**VSC-IR32**  
Thermal MSX Camera Probe



**T199425ACC**  
Two Bay Battery Charger



**T199330ACC**  
Li ion Rechargeable Battery



**VSC-IR21**  
Thermal Camera Probe



**VSC-IR33**  
Thermal MSX Camera Probe



**T911633ACC**  
Power Supply for Charger



**T911631ACC**  
USB-A to USB-C Cable

**Compatible Software: FLIR Thermal Studio**



**TELEDYNE**  
**FLIR**

Everywhere**you**look™

Part of the Teledyne Imaging Group